

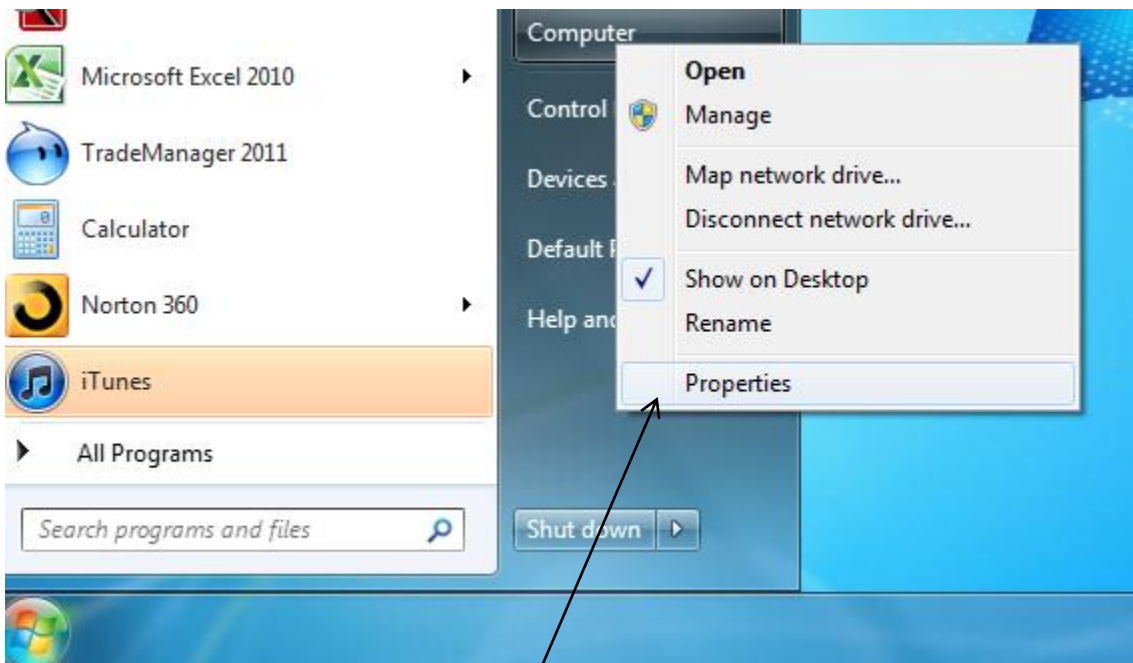
Webcam Trouble Shooting Steps For Windows 7, 8 & 8.1 Users

For use after following Installation
Instructions and Remote Control
is not working

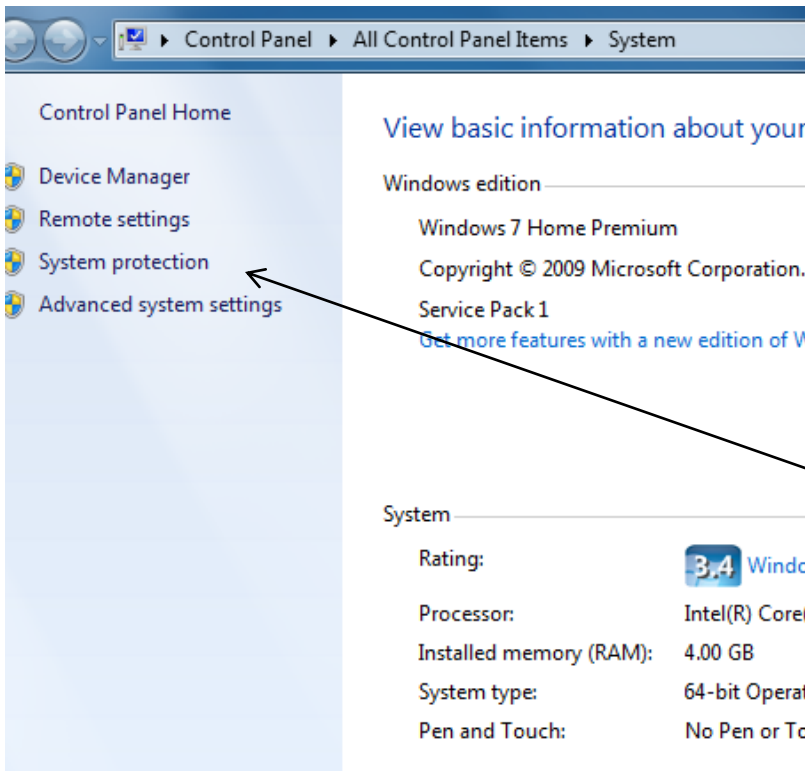


Click Windows Logo

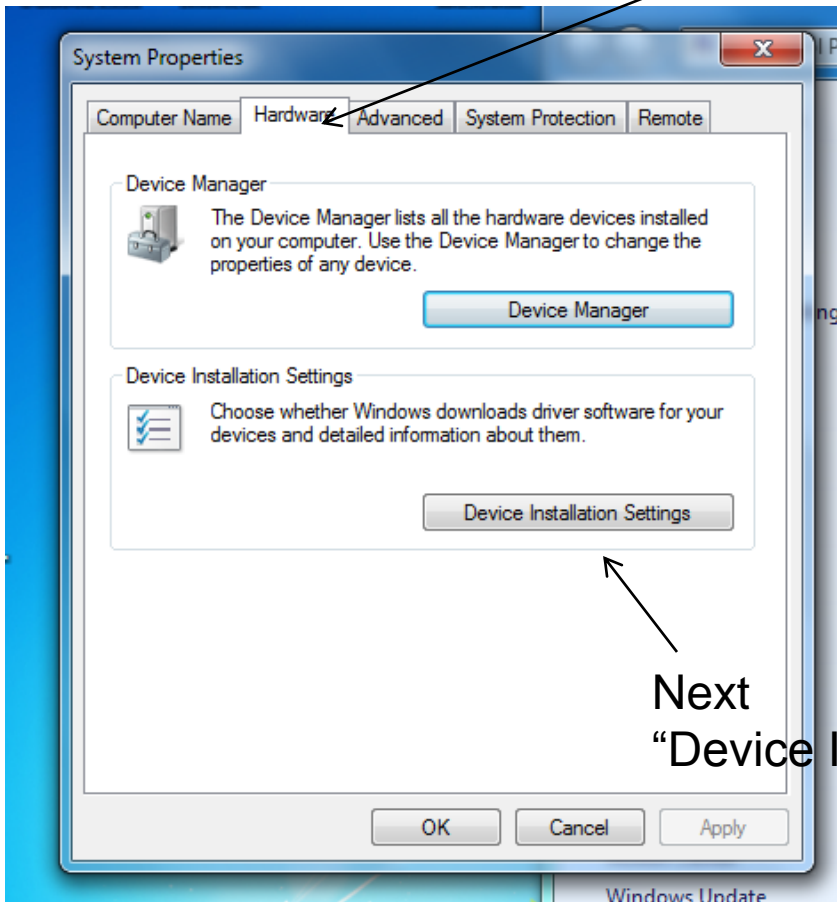
Right click "Computer"



Choose "Properties"

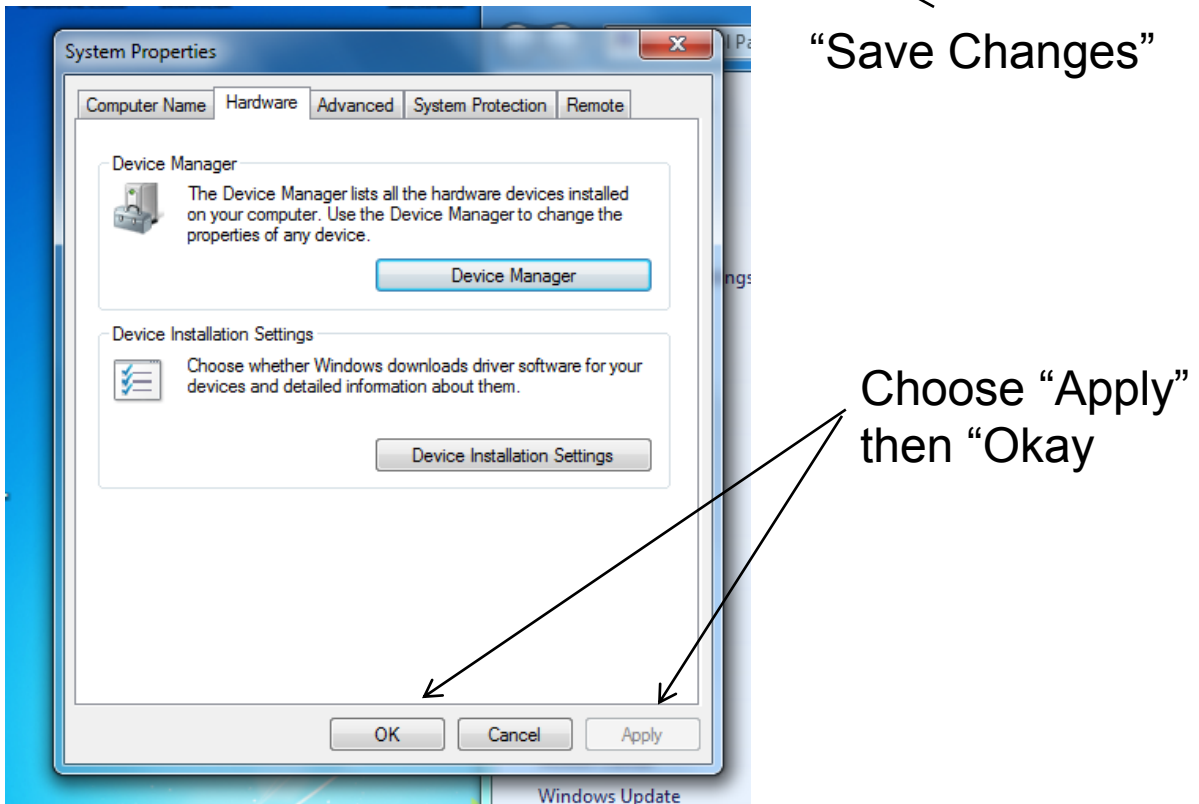
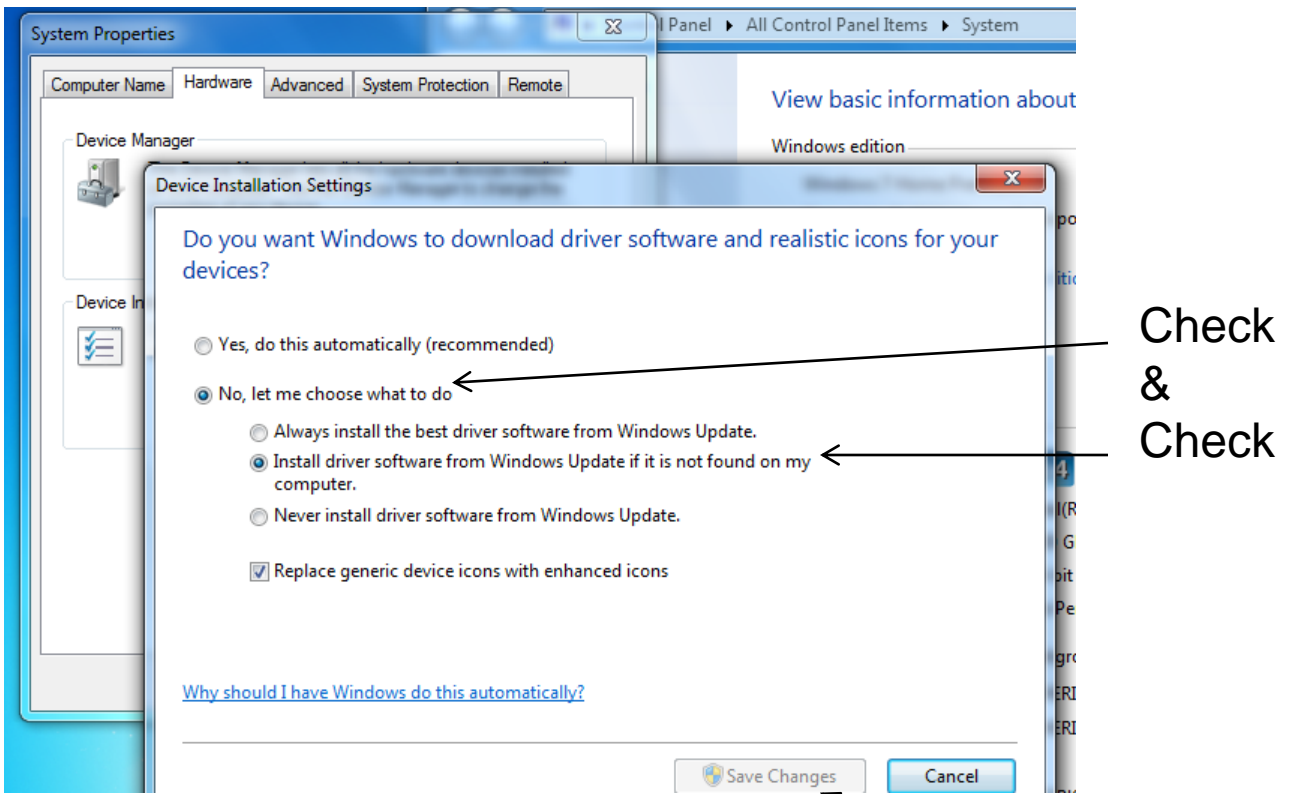


Next
"System Properties"



Choose the
"Hardware" Tab

Next
"Device Installation Settings"



Plug your Camera in & Reinstall Driver